

**THE THIRTY-FIFTH  
ANNUAL CHRISTMAS PROGRAM**

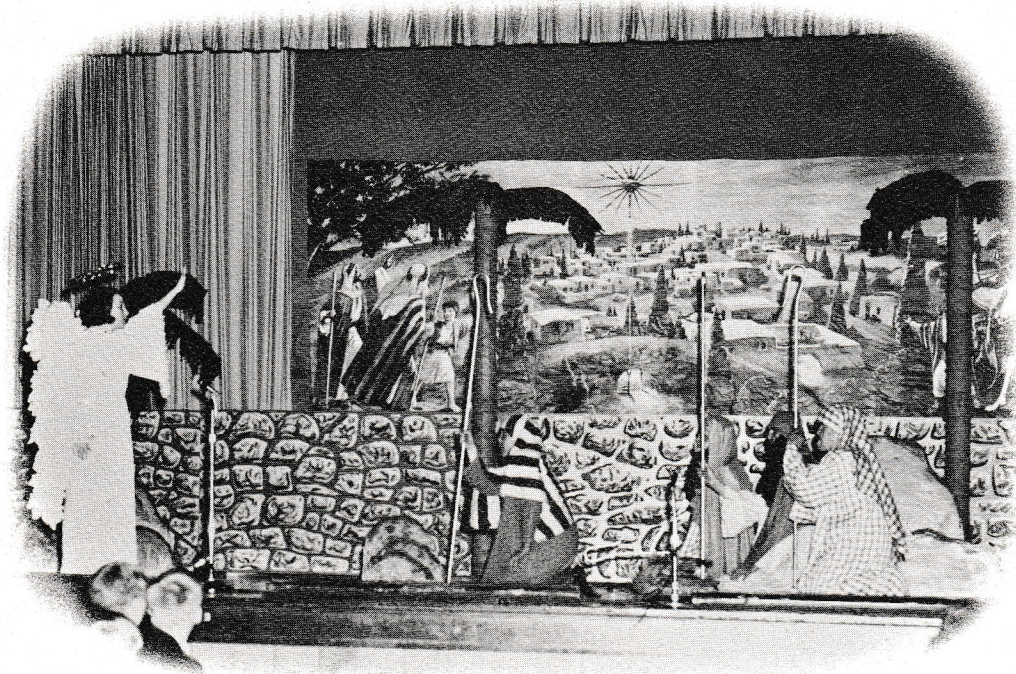
Presented by

**FREDONIA UNIFIED SCHOOLS**

Wednesday, December 18, 1968, 7:30 p.m.

**AUDITORIUM BUILDING**

**FREDONIA, KANSAS**



This is a Religious Service; Please Do Not Applaud or Take Flash Pictures.  
The Blankinship Studio will take the official pictures for the school and  
they will be available at the Studio.



## The Tableau Cast

- MARY . . . . . Lynn Smith
- JOSEPH . . . . . Neal Harrelson
- SHEPHERDS. . . . . Richard Porter, Leon Wolfe,  
Clair Claiborne, Dan Huser, Frank Shay
- ANGEL GABRIEL . . . . . Teresa Neuenschwander
- INN-KEEPER. . . . . Wesley Forsythe
- INN-KEEPER'S DAUGHTER. . . . . Myra Anderson
- MAN AT THE INN . . . . . Tim Whitcomb
- KING HEROD . . . . . Wayne Brinkley
- WISEMEN . . . . . Larry Brockway, Gale Munger, Ron Kelley
- MESSENGER. . . . . Richard Gorton
- SCRIBE. . . . . Aden Hogan
- KING'S GUARDS. . . . . Cary Hutton, Mike Butler
- KING HEROD'S COURT DANCERS . . . . Dorinda Marshall, DeEster Cook  
Susan Clary, Barbara Loether
- ANGELS . . . . . Barbara Ecton, Cindy Ferguson, Connie Matney  
Brenda Carlton, Diana Letterman, Debra Ballinger,  
Nancy Willard, Nanette Ogle, Deanna Clary, Becky Gorton,  
Mary Marcy, Glenda Mellen
- VERSE SPEAKING CHOIR . . . . . Senior High School Students  
Student Director: Debra Ford Asst: Sally Harshaw
- ACCOMPANISTS. . . . . Luann Cain, Beverly Jeffers, Carole Jackson,  
Karen Myers, Bob Beal, Rhonda Clark, Neva Diklich,  
Kenny Hughes, Mildred Hartung, Connie Clark, Terri Harris,  
Nancy Studebaker, Melinda Barnes
- SOLOISTS . . . . . Judy Aitken, Debra Barker, Deanna Green,  
Susan Harshaw, Terri Harris, Howard Mount
- CANDLEBEARERS . . . . . Robert Taylor, Mitch Neuenschwander

## The Christmas Story

- FANFARE FOR CHRISTMAS . . . . . Nelson  
Brass Ensemble and Senior High Chorus
- PROCESSIONAL . . . . . Traditional  
Combined Choruses and Pageant Band
- PROLOGUE . . . . . Georgia Beggs  
Written by: The Junior English Classes
- "THE LORD'S PRAYER" . . . . . Malotte  
Senior High Schools Girls' Glee Club
- "DEAR LITTLE STRANGER" . . . . . Gabriel  
Second, Third, and Fourth Grades, Lincoln and Paulen





SCENE I: VERSE SPEAKING CHOIR (Luke 1:26)

"HAIL MARY" . . . . . Proctor  
Lincoln and Paulen School Choruses

TABLEAU . . . . . THE ANNUNCIATION

"AS JOSEPH WAS A WALKING" . . . . . Old English Carol  
Lincoln and Paulen School Choruses

SCENE II: VERSE SPEAKING CHOIR (Luke 2:1-7)

"NO ROOM IN THE INN" . . . . . Updegraff  
Lincoln and Paulen School Choruses

TABLEAU . . . . . THE INN IN BETHLEHEM

"THE SHEPHERDS AND THE INN" . . . . . Mexican Christmas Carol  
Senior High School Chorus  
Deanna Green, Steve Sell, Billy Wilbur, Howard Mount

SCENE III: VERSE SPEAKING CHOIR (Luke 2:8)

"DO YOU HEAR WHAT I HEAR" . . . . . Simeone  
Junior High School Chorus

TABLEAU . . . . . THE FIELD OF THE SHEPHERDS

"AWAY IN A MANGER" . . . . . Herbert  
Second, Third, and Fourth Grades, Lincoln and Paulen

"STARS LEAD US EVER ON" . . . . . Sioux Indian Carol  
Senior High School Chorus, Judy Aitken, Soloist

SCENE IV: VERSE SPEAKING CHOIR (Matthew 2:1-2)

"WE THREE KINGS OF ORIENT ARE" . . . . . Hopkins  
Senior High School Chorus

TABLEAU . . . . . THE COURT OF KING HEROD

SCENE V: "THE FIRST NOEL" . . . . . Traditional  
Junior High School Chorus

VERSE SPEAKING CHOIR (Luke 2:13-14)

"HARK THE HERALD ANGELS SING" . . . . . Mendlessohn  
Junior High School Chorus, Kenny Hughes, Violinist

TABLEAU . . . . . THE ANGELS

"BEAUTIFUL SAVIOUR" . . . . . Christianson  
Senior High School Chorus, Debra Barker, Soloist

SCENE VI: "GESU BAMBINO" . . . . . Yon  
Senior High School Chorus, Susan Harshaw, Soloist

"O HOLY NIGHT" . . . . . Adam  
Senior High School Chorus, Terri Harris, Soloist

VERSE SPEAKING CHOIR (Luke 2:15-16; Matthew 2: 7-11)

TABLEAU . . . . . ADORATION OF THE CHILD

"SILENT NIGHT" . . . . . Gruber  
Combined Choruses

RECESSIONAL . . . . . Traditional  
Combined Choruses and Pageant Band

**May the Christmas gifts**

**of Peace and Happiness**

**be yours today**

**and throughout the year**

**to come.**



**FREDONIA UNIFIED SCHOOLS**