

THE THIRTY-SIXTH  
ANNUAL CHRISTMAS PROGRAM

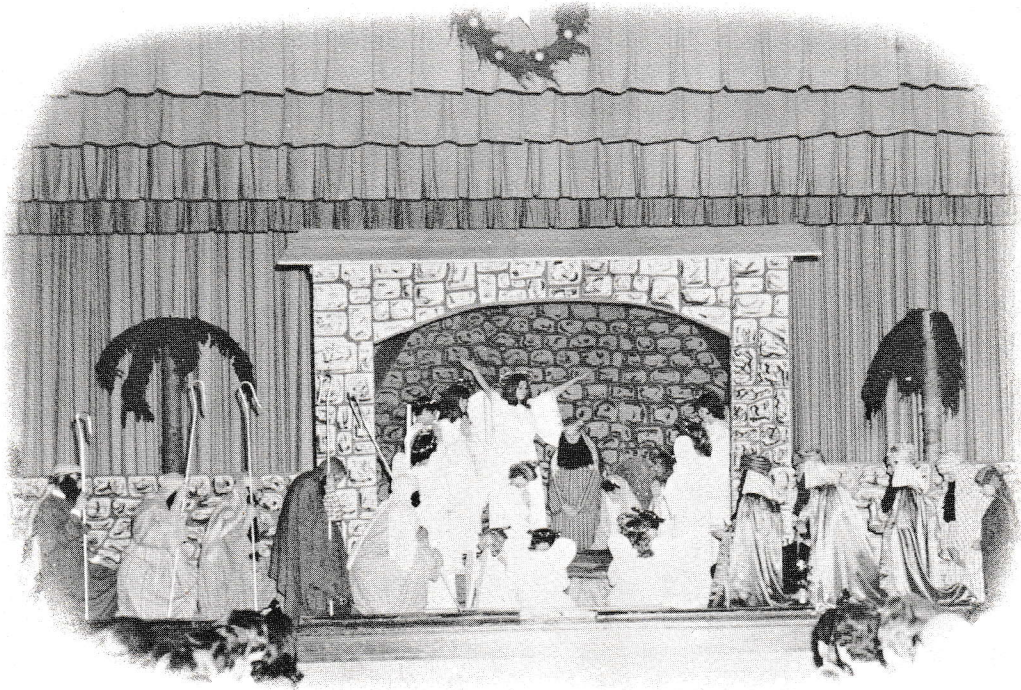
Presented by

FREDONIA UNIFIED SCHOOLS

Monday, December 22, 1969, 7:30 p.m.

AUDITORIUM BUILDING

FREDONIA, KANSAS



This is a Religious Service; Please Do Not Applaud or Take Flash Pictures.  
The Blankinship Studio will take the official pictures for the school and  
they will be available at the Studio.



## The Tableau Cast

- MARY . . . . . Sally Harshaw
- JOSEPH . . . . . Tom Wiggans
- SHEPHERDS . . . . . Jim Nevitt, Barney Schroder  
Bill Stotts, Darrin Winn, Billy Pryor
- ANGEL GABRIEL . . . . . Georgia Beggs
- INN-KEEPER. . . . . Jim Gray
- PEOPLE AT THE INN . . . . . Jo Ellen Clary, Lila Gueulette, Debby Cunningham  
Sharon Eagle, Randy Main, Randy Coats, Ricky Cunningham, Robert Harding  
David Matney, Tom Splecter, Dick Marr, David Wooten
- INN-KEEPER'S DAUGHTER . . . . . Rita Boyer
- MAN AT THE INN . . . . . Jim Hunt
- KING HEROD . . . . . Randy Linn
- WISEMEN . . . . . Steve Relph, John Eplee, Chuck Neuenschwander
- MESSENGER . . . . . Greg Mahan
- SCRIBE. . . . . Bill Lafferty
- KING'S GUARDS . . . . . Lane Scott, Cecil Taylor
- KING HEROD'S COURT DANCERS . . . . . Joan Cummings, Paula Dove  
Shelley Frye, Laura Sidlinger
- ANGELS . . . . . Janet Brown, Sandra Chenault, Vicki Craig  
Beverly Davis, Rita Friend, Donna Green, Laura Hutton  
Cindy Reed, Varee Sierman, Michele Gillen, Janice Weber
- VERSE SPEAKING CHOIR . . . . . Senior High School Students  
Student Director: Sharon Stryker Asst: Patti Apollo
- ACCOMPANISTS. . . . . Luann Cain, Will Varner, Ann Baldrige  
Kenny Hughes, Terri Harris, Jan Goff  
Susan Dalton, Melinda Barnes, Connie Clark, Bob Beal
- SOLOISTS. . . . . Martha Friend, Phillip Young, Jerry Rice  
Mel Barnes, Susan Harshaw, Terri Harris, Debra Barker, Deanna Green
- CANDLEBEARERS . . . . . Dwight Ecton, Brian Mellen

## The Christmas Story

- FANFARE FOR CHRISTMAS . . . . . Nelson  
Brass Ensemble and Senior High Chorus
- PROCESSIONAL . . . . . Traditional  
Combined Choruses and Pageant Band
- PROLOGUE . . . . . Belinda Morris  
Written by: The Junior English Classes
- "THE LORD'S PRAYER" . . . . . Malotte  
Senior High Schools Girls' Glee Club
- "DEAR LITTLE STRANGER" . . . . . Gabriel  
Second, Third, and Fourth Grades, Lincoln and Paulen



SCENE I: VERSE SPEAKING CHOIR (Luke 1:26)  
"HAIL MARY" . . . . . Proctor  
Lincoln and Paulen School Choruses  
TABLEAU . . . . . THE ANNUNCIATION  
"AS JOSEPH WAS A WALKING" . . . . . Old English Carol  
Lincoln and Paulen School Choruses  
SCENE II: VERSE SPEAKING CHOIR (Luke 2:1-7)  
"NO ROOM IN THE INN" . . . . . Updegraff  
Lincoln and Paulen School Choruses  
TABLEAU . . . . . THE INN IN BETHLEHEM  
"THE SHEPHERDS AND THE INN" . . . . . Mexican Christmas Carol  
Senior High School Chorus  
Martha Friend, Phillip Young, Jerry Rice, Mel Barnes  
SCENE III: VERSE SPEAKING CHOIR (Luke 2:8)  
"DO YOU HEAR WHAT I HEAR" . . . . . Simeone  
Junior High School Chorus  
TABLEAU . . . . . THE FIELD OF THE SHEPHERDS  
"AWAY IN A MANGER" . . . . . Herbert  
Second, Third, and Fourth Grades, Lincoln and Paulen  
"STARS LEAD US EVER ON" . . . . . Sioux Indian Carol  
Senior High School Chorus, Susan Harshaw, Soloist  
SCENE IV: VERSE SPEAKING CHOIR (Matthew 2:1-2)  
"WE THREE KINGS OF ORIENT ARE" . . . . . Hopkins  
Senior High School Chorus  
TABLEAU . . . . . THE COURT OF KING HEROD  
SCENE V: "THE FIRST NOEL" . . . . . Traditional  
Junior High School Chorus  
VERSE SPEAKING CHOIR (Luke 2:13-14)  
"HARK THE HERALD ANGELS SING" . . . . . Mendlesohn  
Junior High School Chorus, Kenny Hughes, Violinist  
TABLEAU . . . . . THE ANGELS  
"BEAUTIFUL SAVIOUR" . . . . . Christianson  
Senior High School Chorus, Terri Harris, Soloist, Kenny Hughes, Violinist  
SCENE VI: "GESU BAMBINO" . . . . . Yon  
Senior High School Chorus, Debra Barker, Soloist  
"O HOLY NIGHT" . . . . . Adam  
Senior High School Chorus, Deanna Green, Soloist  
VERSE SPEAKING CHOIR (Luke 2:15-16; Matthew 2: 7-11)  
TABLEAU . . . . . ADORATION OF THE CHILD  
"SILENT NIGHT" . . . . . Gruber  
Combined Choruses  
RECESSIONAL . . . . . Traditional  
Combined Choruses and Pageant Band

**May the Christmas gifts**

**of Peace and Happiness**

**be yours today**

**and throughout the year**

**to come.**



**FREDONIA UNIFIED SCHOOLS**